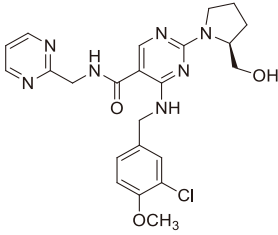


100mg 200mg
50mg

Avanafil Tablets
Afa' nafei Pian

4-[3- -4-]-2-[2S -2-
-1-]-N- -2- -5-



C₂₇H₃₀ClN₇O₃
483.95

2 2%

(N=711)	
	5.6%
	3.5%
	3.4%
	2.1%

1% 2%
URI 3 3 / 12
1%

8 CYP3A4

1.

PDE5

200mg
8.0mmHg 3.3mmHg 1

2 CYP3A4

CYP450 3A4 CYP3A4 CYP3A4

CYP3A4

CYP3A4

3

50mg

24 1

3

PDE5

4 4

6

Peyronie

4

PDE5

NAION NAION

NAION NAION

2.5-11.8/10 NAION

5 NAION

2.15 95%CI 1.06 4.34 2.27 95%CI 0.99 5.20 NAION

NAION NAION

PDE5 NAION

PDE5 NAION

NAION NAION

NAION PDE5

PDE5

PDE5

PDE5

PDE5

PDE5

PDE5

PDE5

PDE5

PDE5

PDE5

PDE5

PDE5

PDE5

PDE5

PDE5

PDE5

PDE5

PDE5

PDE5

PDE5

PDE5

PDE5

	N 100	100mg N 99	200mg N 99
	1.0%	8.1%	12.1%
	0.0%	5.1%	10.1%
	0.0%	3.0%	5.1%
	0.0%	2.0%	3.0%
	1.0%	3.0%	1.0%
	1.0%	3.0%	2.0%
	0.0%	1.0%	3.0%
	0.0%	1.0%	2.0%

	N=143	100mg N=146	200mg N=146
	0.7%	1.4%	8.9%
	0.0%	0.7%	4.1%
	0.0%	0.0%	2.1%

1 100mg 2 200mg
50mg 100mg 200mg 15 15
1 30
2 50mg
3 CYP3A4 CYP3A4
50mg 24 1
2215 493 12 6
153 3 3
56.4 23-88 83.9% 13.8% 1.4%
1% 41.1% 30.6%
1.4% 2.0% 2.0% 1.7%
1 3 3
2%

	N=349	50mg N 217	100mg N 349	200mg N 352
	1.7%	5.1%	6.9%	10.5%
	0.0%	3.2%	4.3%	4.0%
	1.1%	1.8%	2.9%	2.0%
	2.9%	0.9%	2.6%	3.4%
	1.1%	3.2%	2.0%	1.1%

1% 2%
URI

200mg 56.4 23-88 52 712 2
50mg 100mg 2.8%

100mg 200mg 50mg 536 75%
200mg 5 1% 50mg

2 435
58.2 24-86 4

2% 4 2

2%

5 NAION NAION NAION NAION
NAION NAION NAION NAION
50

1. / cGMP /

12

2.

3. GC GC PDE5

4. GC GC 3

6 <90/50mmHg >170/100mmHg 8 PDE5

5. <30ml/min Child-Pugh C 9

6. NAION PDE5 10

7. HIV

[NO]

1. _____